

Emitec: A brief company profile

Emitec Gesellschaft für Emissionstechnologie mbH was founded in 1986. Today, the company is a world leader on the metal substrate market for exhaust gas catalysts and metallic diesel particulate filters for vehicles and mobile machinery. Complete SCR systems round off this product range. Since its foundation Emitec has sold approx. 150 million metal substrates of the highest quality with excellent operating report: zero field failures. Emitec is also a long-standing partner of the car, commercial vehicle and motorcycle industry, the agricultural and construction machinery industry and of many engine manufacturers. The company usually works together with its customers to develop products and systems at its research and test centre.

The company employs around 1,000 people in Lohmar and Eisenach, Germany, in Longeville-lès-Saint-Avold, France, at the Fountain Inn plant in South Carolina, USA, at the plant in Pune, India and at several application engineering offices around the world. Development centres are based in Lohmar, Eisenach and Denmark.

Emitec's most important markets are in Europe, North America and Asia. The company has subsidiaries in China, Japan and Korea.

The company's customers include the major car, truck and motorcycle manufacturers from across the world as well as in the non-road sector producers of tractors, agricultural machinery, construction equipment, ships and diesel locomotives. Emitec owns over 2,500 patents worldwide, a fact that reflects the company's innovative strength.

In September 2010 Emitec significantly expanded its product and system range in the field of SCR technology: it took over the company Grundfos NoNO_x and therefore offers series SCR systems with air assisted and airless urea dosing and injection for the commercial vehicle and non-road sector. The extremely compact Gen III dosing system developed by Emitec will be offered for passenger cars and light-duty commercial vehicles.

Product Range

Metal catalyst substrates and diesel particulate filters for engine exhaust gas aftertreatment:

METALIT[®] Metal Substrates, metal substrates with structured foils (LS-Design[®], PE-Design[™] for 'turbulent' cat), Conical Catalyst substrates (ConiCat[®]), Lambda Sensor Catalysts (Lambdasondenkat[™]), Electrically Heated Catalysts (EMICAT[®]), Partial Flow P-DPF Diesel Particulate Filter (PM-METALIT[®]), Pre Turbocharger

Press enquiries:

Catalysts (Pre Turbo METALIT™), Hybridkat™, Hydrolyse Catalyst for SCR-Systems, Sensor-Catalyst (Sensorkat™) for NO_x-Adsorber, Emitec CompactCat®, SCRI® - System, E-SCR™-System, NoNO_x Airless SCR, NoNO_x Air-assisted SCR

DeNO_x-Systems:

Complete AdBlue SCR systems as well as application and test engineering

EMITEC Gesellschaft für Emissionstechnologie mbH at a glance:

Management:

- Wolfgang Maus (Chairman)
- Andreas Aumüller
- Rolf Brück

Employees 2011:

- Approx. 1,000

Revenue planned 2011:

- Approx. 170 million euros

Major Markets as Percentage of sales:

- Automotive and engine industry: approx. 90%
- Export volume: approx. 50%

Locations, production, development sites and products:

- Lohmar, Germany: Prototypes and series catalyst substrates, research and development, head offices (fig. 1)
- Eisenach, Germany: Series catalyst substrates, test centre (fig. 2)
- Longeville-lès-Saint-Avold, France: Dosing systems, research and development
- Fountain Inn, SC, USA: Series catalyst substrates (fig. 3)
- Pune, Mumbai District, India: Motorcycle catalyst substrates (fig. 4)
- Bjerringbro, Denmark: Research and development
- Rochester Hills, MI, USA: Sales and application engineering office
- Tokio, Japan: Sales and application engineering office
- Seoul, Korea: Sales office
- Beijing and Shanghai, China: Sales and application engineering office

Press enquiries:

Major customers:

AGCO, AvtoVaz, Bajaj, BMW, Dachangjiang, Daewoo, DAF, Daimler, Fiat, Hyundai, Honda, Liebherr, MAN, Opel, Porsche, Renault, Scania, Toyota, TVS, Volkswagen Group, Volvo Powertrain, others



Fig. 1



Fig.2



Fig. 3



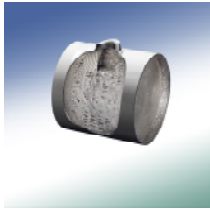
Fig.4

Press enquiries:

Emitec Gesellschaft für Emissionstechnologie mbH
Hauptstraße 128
D-53797 Lohmar
www.emitec.com

Tel.: +49 (0) 22 46 109-311
Fax: +49 (0) 22 46 109-109
Email: presse@emitec.com

Product Range



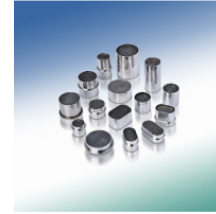
Lambda sensor catalyst



Electrically heated catalyst



PM-METALIT



Pre-turbocharger catalyst

SCR dosing systems for



Large engines



**Truck
(air-assisted)**



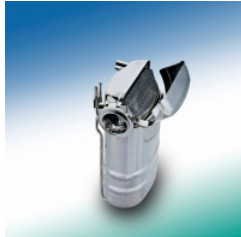
**Truck
(airless)**



Passenger Car



Compact Cat LS-PE



Compact Cat LS-PE



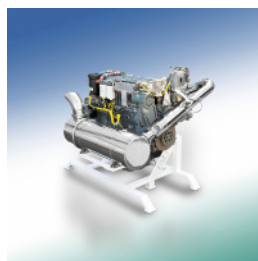
Conical catalyst



Hybrid catalyst



Ring catalyst

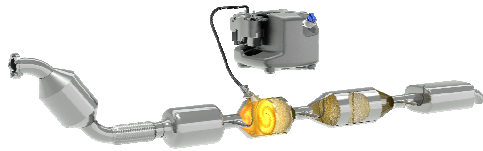


SCR system for NRMM

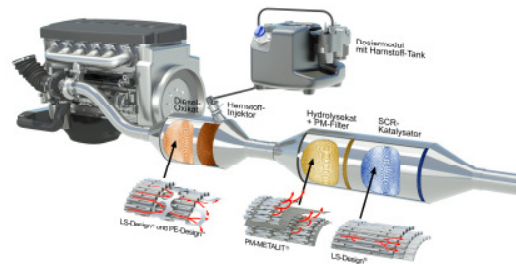
Press enquiries:

Emitec Gesellschaft für Emissionstechnologie mbH
Hauptstraße 128
D-53797 Lohmar
www.emitec.com

Tel.: +49 (0) 22 46 109-311
Fax: +49 (0) 22 46 109-109
Email: presse@emitec.com



E-SCR system



Complete SCR system

Press enquiries:

Emitec Gesellschaft für Emissionstechnologie mbH
Hauptstraße 128
D-53797 Lohmar
www.emitec.com

Tel.: +49 (0) 22 46 109-311
Fax: +49 (0) 22 46 109-109
Email: presse@emitec.com