

---

Sophisticated tests ensure a better environment**State of the Art Test Centre makes possible more effective catalytic converters and particle separators and SCR systems**

Without extensive engineering and development services no effective exhaust systems and zero-error catalytic converters would be possible today. The supply of components and systems in accordance with specifications is not enough. Components and the overall system have to be optimally dimensioned and tested to guarantee cost-effective operation.

For a long time now EMITEC Gesellschaft fuer Emissionstechnologie (Lohmar near Cologne) has not considered itself to be only component supplier, but a development partner for the vehicle and motor industry. With its Test Centre the Company possesses highly dynamic state of the art engine (**fig.1**), component (**fig. 2**) and roller test benches including cold climate chambers. Equipped with the latest emission measurement techniques for diesel and spark ignition applications even the tiniest pollutant concentrations defined in current and future exhaust gas legislation can be measured (for cars : EU 5/6, ULEV, SULEV etc. and for trucks: EU V/VI, US 2010 and Non-Road Tier 4 f etc.). The engine test benches are used for chainsaw engines, motorcycles, petrol and diesel passenger cars, heavy-duty commercial vehicle engines as well as for construction and agricultural machinery engines (**fig. 3**).

On a roller test bench for two-wheelers, an all-wheel roller test bench for passenger cars and light duty commercial vehicles and heavy duty commercial vehicles (**fig. 4, 5**) up to 600 kW a very wide spectrum of applications can be covered.

Together with customers worldwide standards have been set in the implementation of suitable development tools. In the final analysis it is a matter of continuing to ensure the competitive advantage in operational use and new developments. The durability of METALIT<sup>®</sup> catalytic converters under all operating conditions has incidentally been confirmed in the US market by the "Environmental Protection Agency" (EPA). This applies equally to especially critical applications like preturbo catalysts in which the catalytic converters from Lohmar stand out from the competition by virtue of their performance and durability.

Press enquiries:

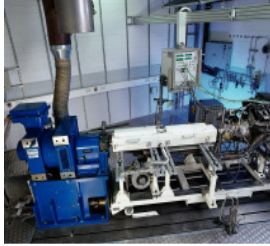


Fig. 1



Fig. 2

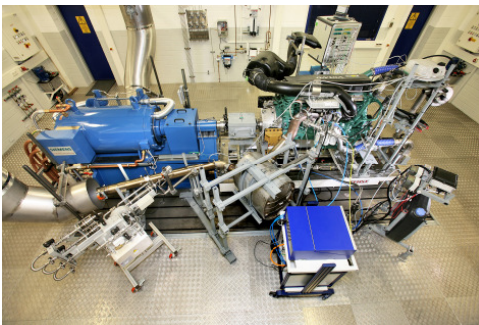


Fig. 3



Fig. 4



Fig. 5

Press enquiries:

Emitec Gesellschaft für Emissionstechnologie mbH  
Hauptstraße 128  
D-53797 Lohmar  
[www.emitec.com](http://www.emitec.com)

Tel.: +49 (0) 22 46 109-311  
Fax: +49 (0) 22 46 109-109  
Email: [presse@emitec.com](mailto:presse@emitec.com)